



# Memorandum

**Date:** March 7, 2025  
**To:** Board of Education  
**From:** Kevin Kaardal, Superintendent of Schools/CEO  
**Prepared by:** Randy Horne, Director of Instruction – Inclusive Education

**Information: Suspension Summary Report: 2018-2019 to 2023-2024**

---

## 1.0 RELEVANT BOARD MOTION/DIRECTION

Board Policy 455 – Discipline and Regulations 455R – Discipline (*Regulations*) (attached as Appendix A).

## 2.0 BACKGROUND

Since 1991, the Board has received an annual summary of suspensions for the previous six years. Suspensions are divided into two categories:

- DEFINITE suspensions are given to those students who have committed infractions and are suspended up to a maximum of ten days.
- INDEFINITE suspensions are given to students who are repeat offenders or students who have committed very serious infractions. These students are suspended for an indefinite period of time (more than ten days) and must appear before a committee of the Board of Education.

## 3.0 SUPERINTENDENT'S COMMENTS

The decision to suspend a student is only made after the circumstances have been given serious consideration. Suspensions can, however, be a necessary and effective way to address challenges with student behaviour. Definite suspensions (from one to ten days) are a decision of the school-based administration, while indefinite suspensions require a hearing involving a Trustee and a District staff member. All suspensions are subject to the appeal process.

Indefinite suspensions remain relatively rare considering the number of students in the School District, with 3 taking place during the 2023-2024 school year (1 in 2022-2023 school year).

Definite suspensions are far more common (814 in 2023-2024 and 724 in 2022-2023) and the reasons for suspensions as well as the grade level of students are more varied. Almost 100% of students return to their previous educational program at the conclusion of the definite suspension.

## 4.0 APPENDICES

- A. Policy 455 – Discipline and Regulations 455R – Discipline (*Regulations*)
- B. Suspension Summaries: 2018-2019 to 2023-2024
- C. Indefinite and Definite Suspensions Data Analysis 2023-2024 and Summary

## APPENDIX A

School District No. 23 (Central Okanagan)

Policies And Procedures

### **Section Four: Students**



*“Together We Learn”*

#### **455 – DISCIPLINE**

##### **Introduction**

The Board of Education believes that respect and discipline are important elements which affect all students’ experience and achievement at school. To this end, the Board is committed to providing a safe, caring and orderly environment for everyone in the school environment.

A safe school environment is conducive to learning and the development of positive interpersonal interactions among students, employees, parents and the community. Such positive interpersonal interactions are characterized by courtesy and respect for one another.

##### **Policy**

##### **Code of Conduct**

1. Principals at each school, in consultation with all partner groups and students where appropriate, shall establish and review annually a code of conduct for the school. The code of conduct shall include statements of expectations for student attendance and behaviour. The code of conduct must be consistent with the School Act and Regulations as well as Board policy. In addition, the code should be mindful of the intended audience and include statements promoting positive attitudes towards school, respect for the dignity of others, their rights and property, and the importance of regular school attendance.
2. The Board believes all staff set the tone for what is considered to be appropriate student behaviour.
3. It is the duty of all administrators and teachers to enforce the code of conduct.
4. It is expected that students will abide by the school’s code of conduct going to and from school, while at school, on school buses and at school functions, including field studies, wherever and whenever held.
5. The Board believes prompt notification by administration to parents or guardians is essential in dealing with matters related to student conduct, discipline and safety.



**Section Four: Students**

6. Disciplinary actions arising as a result of students not adhering to the code of conduct will be based on the concept of progressive discipline and the least possible erosion of instructional time. Principals must use discretion in determining the seriousness of the situation and in deciding upon the appropriate consequence.
7. Schools should develop and implement initiatives or programs designed to assist students in learning acceptable coping behaviours for dealing with anger, fear and peer pressure. Schools should also promote the development of healthy self-concepts and positive school environments.

Date Agreed: April 23, 1980

Date Amended: June 13, 1990; February 23; 1994; June 24, 1998;

Date Agreed: November 13, 2002

Date Amended: June 23, 2004; June 10, 2009; October 23, 2019

Related Documents: School Act Sec. 6,7, School Reg. 4,5, 455R



*“Together We Learn”*

School District No. 23 (Central Okanagan)

Policies And Procedures

## **Section Four: Students**

### **455R – DISCIPLINE (REGULATIONS)**

#### **1. Code of Conduct**

- 1.1 The code of conduct must be distributed to the staff, students and parents at the beginning of each school year and at regular intervals through the year.
  - 1.1.1 Students enrolling at the school during the year shall be provided with a copy of the school code of conduct.
  - 1.1.2 Staff joining a school during the school year shall be provided with a copy of the school code of conduct.
- 1.2 Every student shall be subject to the code of conduct.
  - 1.2.1 Principals will ensure, where appropriate, that special needs students who violate the code of conduct are referred to the school-based team, and that the code of conduct (including consequences) is applied to them in a manner that reflects their intellectual, physical, sensory, emotional or behavioural abilities.
- 1.3 Principals shall ensure that the school code of conduct is displayed in a prominent area of the school.
- 1.4 The principal may include, in the code of conduct, examples of possible action to be taken for a student who does not adhere to the code.
- 1.5 The code of conduct must indicate that students may be disciplined for violations which occur going to and from school, off school property (and outside of regular school hours), if such violations adversely affect students or the operation of any school.
- 1.6 Principals shall include and address the following list of violations and information on serious violations in the school's code of conduct.

To be included and addressed in the school's code of conduct:

- **Attendance**

Every student shall be required to attend school on each prescribed school day and shall not leave school without authorization (as determined by the school's code of conduct).



## Section Four: Students

- **Truancy**  
A student who is truant on a frequent basis may be definitely suspended.
- **Smoking/Vaping**  
By provincial law, smoking/vaping is not allowed in any school buildings, or on school property. A student found smoking/vaping may be definitely suspended. A condition of return to school will be a conference between the parents/guardians, the student and the principal. See Policy 640: *District Smoke-Free Environment*.
- **Cannabis Products**  
Smoking Cannabis or consuming cannabis products on school property is illegal. A student consuming cannabis or under the influence of cannabis products may be definitely suspended.
- **Alcohol**  
A student consuming or possessing intoxicating liquor on the school premises or at a school function on/off school premises may be definitely suspended.
- **Failure of a Student to Apply Him/Herself to Their Studies**  
Where a student 16 years of age or older repeatedly fails to apply him/herself to their studies, as set out in the *School Act*, Section 85(3), that student may be indefinitely suspended.
- **Language**  
A student who uses inappropriate language may be definitely suspended.
- **Student Dress**  
Students must dress appropriately for school and school events, as determined by the Principal in consultation with the Parent Advisory Council and staff.
- **Wilful Disobedience**  
A student who is wilfully disobedient to a teacher or any other employee of the Board of Education carrying out responsibilities approved by the Board may be definitely suspended.



## Section Four: Students

- **Repeated Violations of Smoking/Vaping, Alcohol Abuse, Truancy or Inappropriate Language**  
A student may be indefinitely suspended.
- **Bomb Threat**  
A student involved in a bomb threat may be indefinitely suspended.
- **Drugs**  
The possession or exchange of drugs is illegal and is known to have harmful effects on health. No student may come to school having consumed drugs, consume drugs at school, exchange or possess drugs while attending school or a school-sponsored activity.  
  
A student involved in the possession, exchange or use of drugs other than those medically prescribed for the student's use, on school premises or at a school function on or off school premises, may be indefinitely suspended.
- **Vandalism, Violent Behaviour, Assault or Intimidation (Bullying)**  
A student involved in vandalism, violent behaviour, assault or intimidation may be definitely or indefinitely suspended.
- **Possession of Weapons**  
Use of a weapon or any implement used as a weapon is prohibited.  
A student in the possession of a weapon may be definitely or indefinitely suspended.
- **Student Use of Electronic Communication and Social Media**  
Use of electronic and social media communication which violates the terms outlined in Policy 486 – *Student Use of Electronic and Social Media Communication*, the Student Network Account and Internet Agreement, or the school's Code of Conduct may result in serious consequences including definite or indefinite suspensions and/or police intervention.
- **Serious Violations are those which:**
  - a. occur repeatedly;
  - b. may be dangerous to the safety of students, teachers and staff;
  - c. may cause health hazards;
  - d. may constitute criminal acts;
  - e. may lead to indefinite suspensions.



## Section Four: Students

- **Discrimination or similar acts as defined by the BC Human Rights Code.**
  - Any participants (students, staff, parents or visitors) in school business, activities or events shall conduct themselves in a manner that does not contravene the BC Human Rights Code and its basic principles of respect and fairness.
  - No person shall discriminate against another person(s) either within the school environment or through the school system and its related function through publication or in accommodation, service or facility.

1.7 Principals shall ensure school codes of conduct are reviewed on an annual basis with staff, parents and students to assess the effectiveness of the code of conduct in addressing current school safety issues.

### 2. Breaches of the Code of Conduct

- 2.1 Students who do not abide by the code of conduct may be subject to disciplinary measures.
- 2.2 The principal must use discretion in determining the seriousness of the situation and in deciding upon consequences. This must include consideration of the student’s age, maturity, and special needs, if any. The principal must also ensure appropriate supports are provided to students who violate the code.
- 2.3 The following circumstances will be reported to the RCMP, as well as the student’s parents, if there is sufficient evidence that a student while under school supervision:
- is in possession of or is trafficking an illicit drug, or
  - has violated a federal or provincial statute.
- 2.4 Any person reporting an incident or suspected incident shall be protected as much as possible from retaliation.

### 3. Suspensions

A suspension is a removal of a student’s right to attend regularly scheduled instructional sessions. All suspensions must be immediately reported to the parents or guardians. School personnel may not discharge a student from the school until a parent/guardian, a designate of a parent/guardian or a representative from the Ministry of Children and Family Development is prepared to assume responsibility for the student. During the period of a suspension, principals shall ensure that suspended students are provided with appropriate schoolwork.

Whenever possible and appropriate, consequences for contraventions of the code of conduct shall be restorative in nature rather than punitive.



## Section Four: Students

Suspensions may be either:

**Definite** – up to and including ten school days. Definite suspensions are the responsibility of the school-based administrator, or

**Indefinite** – in excess of ten school days. Indefinite suspensions must be referred to the Board’s District Suspension Review Committee.

Suspensions, both definite and indefinite, may have one or more of the following objectives to:

- improve and/or correct student behaviour;
- deter other students from similar behaviour;
- plan proactive educational interventions;
- clarify and solve problems;
- protect the suspended student and/or other students/staff from dangerous behaviours;
- provide or develop restorative justice opportunities.

- 3.1 Principals may suspend a student when he/she concludes that a student fails to comply with the school’s code of conduct.
- 3.2 The principal may remove a suspension he/she has imposed on a student.
- 3.3 At all levels of the suspension process parents may seek help from an advocate.
- 3.4 The Principal must send a suspension letter to the parent or guardian of the student, and a copy to the Chairperson of the District Review Committee, outlining the type of incident and the duration of suspension. When an indefinite suspension has been applied, the principal shall append to the letter to the parent/guardian an information sheet (Form 455.1) provided by the chairperson of the District Suspension Review Committee which explains the purpose of the Committee, the agenda for the meeting, the right of the parent/guardian to invite a family advocate, and the right of the parent/guardian to appeal decisions to the Board.
- 3.5 As soon as is practicable after receipt of an indefinite suspension report the District Suspension Review Committee will meet to review the suspension. This meeting will take place after a minimum of ten school days from the date of the suspension.

### 4. Records

To ensure appropriate tracking and due process, the principal must record:

- 4.1 the date or dates warnings were given, the reasons for the warnings and actions taken by the school;





## **Section Four: Students**

- 4.2 arrangements have been made for interviews with the parents/guardians and the dates on which the interviews have been held; and comments made by parents.

### **5. District Suspension Review Committee**

- 5.1 The District Suspension Review Committee, as authorized by Policy 170, shall comprise two members:
- the Superintendent of Schools (or designate) as chairperson; and
  - a trustee.
- 5.2 The Superintendent (or designate) shall convene a meeting of the District Suspension Review Committee, as soon as may be practical, to discuss an indefinitely suspended student.
- 5.3 The principal (or designate), the student, along with his/her parent/guardian and/or advocate, and an interpreter/translator, if necessary, shall be invited to meet with the committee to discuss the suspension.
- 5.4 The District Suspension Review Committee may not meet unless both the suspended student and a parent/guardian are present.
- 5.5 The committee shall develop and implement recommendations concerning the education, health, and welfare of the suspended student.
- 5.6 Parents/guardians shall be fully informed, in writing, of their right to appeal any recommendations of the District Suspension Review Committee directly to the Board (as per Appeals Policy 460), and to their rights to have a family advocate(s) present at the meeting.

Date Agreed: November 13, 2002

Date Amended: June 11, 2003; June 23, 2004; May 11, 2005; December 6, 2007;  
June 10, 2009; November 26, 2014; October 24, 2018

Date Reviewed:

Related Documents: School Act Sec. 6, 85(3), BC Human Rights Code, Form  
455.1, Policies 170, 460, 486, 640









**TABLE # 3 - INDEFINITE SUSPENSIONS BY GENDER AND GRADE****2023-2024**

|               | gr3 | gr4 | gr5 | gr6 | gr7 | gr8 | gr9 | gr10 | gr11 | gr12 | PT | WE | TOTAL |
|---------------|-----|-----|-----|-----|-----|-----|-----|------|------|------|----|----|-------|
| <b>Female</b> | 0   | 0   | 0   | 0   | 0   | 0   | 0   | 0    | 0    | 0    | 0  | 0  | 0     |
| <b>Male</b>   | 0   | 0   | 0   | 0   | 0   | 0   | 1   | 2    | 0    | 0    | 0  | 0  | 3     |
| <b>Total</b>  | 0   | 0   | 0   | 0   | 0   | 0   | 1   | 2    | 0    | 0    | 0  | 0  | 3     |

**2022-2023**

|               | gr2 | gr4 | gr5 | gr6 | gr7 | gr8 | gr9 | gr10 | gr11 | gr12 | PT | WE | TOTAL |
|---------------|-----|-----|-----|-----|-----|-----|-----|------|------|------|----|----|-------|
| <b>Female</b> | 0   | 0   | 0   | 0   | 0   | 0   | 0   | 0    | 1    | 0    | 0  | 0  | 1     |
| <b>Male</b>   | 0   | 0   | 0   | 0   | 0   | 0   | 0   | 0    | 0    | 0    | 0  | 0  | 0     |
| <b>Total</b>  | 0   | 0   | 0   | 0   | 0   | 0   | 0   | 0    | 1    | 0    | 0  | 0  | 1     |

**2021-2022**

|               | gr2 | gr4 | gr5 | gr6 | gr7 | gr8 | gr9 | gr10 | gr11 | gr12 | PT | WE | TOTAL |
|---------------|-----|-----|-----|-----|-----|-----|-----|------|------|------|----|----|-------|
| <b>Female</b> | 0   | 0   | 0   | 0   | 2   | 0   | 0   | 0    | 0    | 0    | 0  | 0  | 2     |
| <b>Male</b>   | 0   | 0   | 0   | 0   | 0   | 0   | 0   | 1    | 0    | 0    | 0  | 0  | 1     |
| <b>Total</b>  | 0   | 0   | 0   | 0   | 2   | 0   | 0   | 1    | 0    | 0    | 0  | 0  | 3     |

**2020-2021**

|               | gr2 | gr4 | gr5 | gr6 | gr7 | gr8 | gr9 | gr10 | gr11 | gr12 | PT | WE | TOTAL |
|---------------|-----|-----|-----|-----|-----|-----|-----|------|------|------|----|----|-------|
| <b>Female</b> | 0   | 0   | 0   | 0   | 0   | 0   | 0   | 0    | 0    | 0    | 0  | 0  | 0     |
| <b>Male</b>   | 0   | 0   | 0   | 0   | 0   | 0   | 0   | 0    | 0    | 0    | 0  | 0  | 0     |
| <b>Total</b>  | 0   | 0   | 0   | 0   | 0   | 0   | 0   | 0    | 0    | 0    | 0  | 0  | 0     |

**2019-2020**

|               | gr2 | gr4 | gr5 | gr6 | gr7 | gr8 | gr9 | gr10 | gr11 | gr12 | PT | WE | TOTAL |
|---------------|-----|-----|-----|-----|-----|-----|-----|------|------|------|----|----|-------|
| <b>Female</b> | 0   | 0   | 0   | 0   | 0   | 0   | 0   | 0    | 0    | 0    | 0  | 0  | 0     |
| <b>Male</b>   | 0   | 0   | 0   | 0   | 0   | 0   | 0   | 0    | 0    | 0    | 0  | 0  | 0     |
| <b>Total</b>  | 0   | 0   | 0   | 0   | 0   | 0   | 0   | 0    | 0    | 0    | 0  | 0  | 0     |

**2018-2019**

|               | gr3 | gr4 | gr5 | gr6 | gr7 | gr8 | gr9 | gr10 | gr11 | gr12 | PT | WE | TOTAL |
|---------------|-----|-----|-----|-----|-----|-----|-----|------|------|------|----|----|-------|
| <b>Female</b> | 0   | 0   | 0   | 0   | 0   | 0   | 0   | 0    | 0    | 0    | 0  | 0  | 0     |
| <b>Male</b>   | 0   | 0   | 0   | 0   | 0   | 0   | 0   | 0    | 2    | 1    | 0  | 0  | 3     |
| <b>Total</b>  | 0   | 0   | 0   | 0   | 0   | 0   | 0   | 0    | 2    | 1    | 0  | 0  | 3     |

**TABLE # 4 – DEFINITE SUSPENSIONS BY GRADE AND REASON**

**DEFINITE SUSPENSIONS**

**2023-2024**

| GRADE         | AC | AI | ALC | ASSAULT | BEHAV | BULLY | DRUGS | FIGHT | LANG | SMOKE | THEFT | TRUANT | VANDAL | WEAPON | TOTAL |
|---------------|----|----|-----|---------|-------|-------|-------|-------|------|-------|-------|--------|--------|--------|-------|
| <b>K</b>      | 0  | 0  | 0   | 0       | 0     | 0     | 0     | 0     | 0    | 0     | 0     | 0      | 0      | 0      | 0     |
| <b>1</b>      | 0  | 0  | 0   | 0       | 1     | 0     | 0     | 0     | 0    | 0     | 0     | 0      | 0      | 0      | 1     |
| <b>2</b>      | 0  | 0  | 0   | 0       | 2     | 0     | 0     | 1     | 0    | 0     | 0     | 0      | 0      | 0      | 3     |
| <b>3</b>      | 0  | 0  | 0   | 1       | 7     | 0     | 0     | 0     | 0    | 0     | 0     | 0      | 0      | 0      | 8     |
| <b>4</b>      | 0  | 0  | 0   | 2       | 12    | 2     | 0     | 5     | 0    | 1     | 0     | 0      | 0      | 0      | 22    |
| <b>5</b>      | 0  | 0  | 0   | 3       | 19    | 0     | 0     | 9     | 0    | 1     | 4     | 0      | 0      | 2      | 38    |
| <b>6</b>      | 0  | 0  | 0   | 5       | 11    | 7     | 0     | 20    | 0    | 2     | 1     | 0      | 0      | 0      | 46    |
| <b>7</b>      | 0  | 0  | 1   | 7       | 21    | 19    | 7     | 15    | 0    | 9     | 0     | 0      | 2      | 0      | 81    |
| <b>8</b>      | 0  | 0  | 0   | 11      | 25    | 7     | 28    | 7     | 2    | 11    | 2     | 1      | 1      | 0      | 95    |
| <b>9</b>      | 0  | 2  | 2   | 13      | 63    | 12    | 23    | 30    | 1    | 35    | 3     | 21     | 6      | 4      | 215   |
| <b>10</b>     | 0  | 0  | 3   | 3       | 47    | 7     | 9     | 18    | 0    | 25    | 0     | 23     | 3      | 3      | 141   |
| <b>11</b>     | 1  | 0  | 1   | 4       | 32    | 2     | 7     | 16    | 0    | 36    | 1     | 15     | 1      | 0      | 116   |
| <b>12</b>     | 0  | 0  | 1   | 3       | 12    | 0     | 5     | 7     | 0    | 11    | 1     | 5      | 3      | 0      | 48    |
| <b>SU</b>     |    |    |     |         |       |       |       |       |      |       |       |        |        |        |       |
| <b>TOTALS</b> | 1  | 2  | 8   | 52      | 252   | 56    | 79    | 128   | 3    | 131   | 12    | 65     | 16     | 9      | 814   |

**2022-2023**

| GRADE         | ALC | ASSAULT | BEHAV | BULLY | DRUGS | FIGHT | LANG | SMOKE | THEFT | TRUANT | VANDAL | WEAPON | TOTAL |
|---------------|-----|---------|-------|-------|-------|-------|------|-------|-------|--------|--------|--------|-------|
| <b>K</b>      | 0   | 0       | 0     | 0     | 0     | 0     | 0    | 0     | 0     | 0      | 0      | 0      | 0     |
| <b>1</b>      | 0   | 0       | 2     | 0     | 0     | 0     | 0    | 0     | 0     | 0      | 0      | 0      | 2     |
| <b>2</b>      | 0   | 0       | 4     | 1     | 0     | 2     | 0    | 0     | 0     | 0      | 0      | 0      | 7     |
| <b>3</b>      | 0   | 1       | 3     | 3     | 0     | 1     | 0    | 0     | 0     | 0      | 0      | 0      | 8     |
| <b>4</b>      | 0   | 0       | 5     | 2     | 0     | 1     | 0    | 1     | 0     | 0      | 0      | 0      | 9     |
| <b>5</b>      | 0   | 0       | 6     | 1     | 0     | 0     | 0    | 0     | 0     | 0      | 0      | 0      | 7     |
| <b>6</b>      | 1   | 1       | 16    | 1     | 6     | 14    | 1    | 7     | 0     | 3      | 5      | 0      | 55    |
| <b>7</b>      | 0   | 4       | 24    | 16    | 9     | 4     | 0    | 20    | 0     | 3      | 3      | 2      | 85    |
| <b>8</b>      | 0   | 11      | 22    | 15    | 16    | 19    | 2    | 21    | 5     | 4      | 0      | 2      | 117   |
| <b>9</b>      | 2   | 15      | 29    | 11    | 17    | 16    | 1    | 30    | 2     | 7      | 4      | 4      | 138   |
| <b>10</b>     | 0   | 2       | 48    | 7     | 21    | 12    | 4    | 32    | 2     | 10     | 0      | 6      | 144   |
| <b>11</b>     | 2   | 2       | 30    | 3     | 10    | 11    | 0    | 34    | 0     | 10     | 0      | 3      | 105   |
| <b>12</b>     | 2   | 3       | 8     | 1     | 6     | 7     | 3    | 10    | 0     | 7      | 0      | 0      | 47    |
| <b>SU</b>     | 0   | 0       | 0     | 0     | 0     | 0     | 0    | 0     | 0     | 0      | 0      | 0      | 0     |
| <b>TOTALS</b> | 7   | 39      | 197   | 61    | 85    | 87    | 11   | 155   | 9     | 44     | 12     | 17     | 724   |

**TABLE # 4 – DEFINITE SUSPENSIONS BY GRADE AND REASON - continued**

**2021-2022**

| GRADE         | ALC       | ASSAULT   | BEHAV      | BULLY     | DRUGS      | FIGHT      | LANG     | SMOKE      | THEFT     | TRUANT    | VANDAL    | WEAPON    | TOTAL       |
|---------------|-----------|-----------|------------|-----------|------------|------------|----------|------------|-----------|-----------|-----------|-----------|-------------|
| K             | 0         | 0         | 1          | 0         | 0          | 0          | 0        | 0          | 0         | 0         | 0         | 0         | 1           |
| 1             | 0         | 0         | 1          | 0         | 0          | 0          | 0        | 0          | 0         | 0         | 1         | 0         | 2           |
| 2             | 0         | 0         | 1          | 0         | 0          | 0          | 0        | 0          | 0         | 0         | 0         | 0         | 1           |
| 3             | 0         | 0         | 2          | 0         | 0          | 0          | 0        | 0          | 0         | 0         | 0         | 0         | 2           |
| 4             | 0         | 1         | 5          | 0         | 0          | 1          | 0        | 0          | 0         | 0         | 0         | 0         | 7           |
| 5             | 0         | 0         | 11         | 0         | 0          | 3          | 1        | 0          | 0         | 0         | 0         | 2         | 17          |
| 6             | 0         | 7         | 17         | 4         | 3          | 9          | 1        | 9          | 1         | 0         | 5         | 2         | 58          |
| 7             | 2         | 8         | 23         | 24        | 9          | 23         | 1        | 7          | 0         | 3         | 9         | 0         | 109         |
| 8             | 1         | 23        | 71         | 14        | 20         | 29         | 1        | 38         | 1         | 10        | 22        | 2         | 232         |
| 9             | 7         | 14        | 52         | 14        | 38         | 31         | 1        | 43         | 5         | 21        | 20        | 6         | 252         |
| 10            | 5         | 2         | 30         | 10        | 10         | 19         | 2        | 31         | 2         | 13        | 11        | 1         | 136         |
| 11            | 1         | 3         | 48         | 7         | 24         | 20         | 0        | 31         | 5         | 11        | 5         | 1         | 156         |
| 12            | 0         | 3         | 27         | 5         | 10         | 6          | 1        | 11         | 0         | 7         | 1         | 1         | 72          |
| SU            | 0         | 0         | 0          | 0         | 0          | 0          | 0        | 0          | 0         | 0         | 0         | 0         | 0           |
| <b>TOTALS</b> | <b>16</b> | <b>61</b> | <b>289</b> | <b>78</b> | <b>114</b> | <b>141</b> | <b>8</b> | <b>170</b> | <b>14</b> | <b>65</b> | <b>74</b> | <b>15</b> | <b>1045</b> |

**2020-2021**

| GRADE         | ALC       | ASSAULT   | BEHAV      | BULLY     | DRUGS     | FIGHT      | LANG      | SMOKE      | THEFT     | TRUANT    | VANDAL    | WEAPON    | TOTAL      |
|---------------|-----------|-----------|------------|-----------|-----------|------------|-----------|------------|-----------|-----------|-----------|-----------|------------|
| K             | 0         | 0         | 0          | 0         | 0         | 0          | 0         | 0          | 0         | 0         | 0         | 0         | 0          |
| 1             | 0         | 0         | 2          | 0         | 0         | 0          | 0         | 0          | 0         | 0         | 0         | 0         | 2          |
| 2             | 0         | 0         | 4          | 0         | 0         | 0          | 0         | 0          | 0         | 0         | 0         | 0         | 4          |
| 3             | 0         | 1         | 3          | 0         | 0         | 2          | 0         | 0          | 0         | 0         | 0         | 0         | 6          |
| 4             | 0         | 0         | 4          | 4         | 0         | 2          | 2         | 0          | 0         | 0         | 0         | 0         | 12         |
| 5             | 0         | 3         | 13         | 0         | 1         | 2          | 2         | 0          | 0         | 0         | 0         | 2         | 23         |
| 6             | 0         | 9         | 27         | 9         | 6         | 19         | 0         | 3          | 2         | 4         | 2         | 0         | 81         |
| 7             | 1         | 19        | 52         | 12        | 15        | 18         | 1         | 6          | 3         | 14        | 2         | 6         | 149        |
| 8             | 4         | 10        | 49         | 13        | 14        | 21         | 5         | 28         | 3         | 8         | 2         | 1         | 158        |
| 9             | 1         | 4         | 41         | 13        | 15        | 39         | 3         | 41         | 1         | 13        | 0         | 1         | 172        |
| 10            | 3         | 1         | 18         | 5         | 10        | 16         | 1         | 17         | 1         | 5         | 0         | 1         | 78         |
| 11            | 3         | 0         | 29         | 6         | 18        | 14         | 0         | 16         | 0         | 11        | 0         | 2         | 99         |
| 12            | 1         | 0         | 9          | 1         | 5         | 12         | 0         | 5          | 0         | 2         | 4         | 2         | 41         |
| SU            | 0         | 0         | 0          | 0         | 0         | 0          | 0         | 0          | 0         | 0         | 0         | 0         | 0          |
| <b>TOTALS</b> | <b>13</b> | <b>47</b> | <b>251</b> | <b>63</b> | <b>84</b> | <b>145</b> | <b>14</b> | <b>116</b> | <b>10</b> | <b>57</b> | <b>10</b> | <b>15</b> | <b>825</b> |



**TABLE # 4 – DEFINITE SUSPENSIONS BY GRADE AND REASON - continued**

**2019-2020**

| GRADE         | ALC       | ASSAULT   | BEHAV      | BULLY     | DRUGS      | FIGHT      | LANG      | SMOKE      | THEFT     | TRUANT     | VANDAL    | WEAPON    | TOTAL      |
|---------------|-----------|-----------|------------|-----------|------------|------------|-----------|------------|-----------|------------|-----------|-----------|------------|
| K             | 0         | 0         | 1          | 0         | 0          | 2          | 0         | 0          | 0         | 0          | 0         | 0         | 3          |
| 1             | 0         | 0         | 1          | 1         | 0          | 0          | 1         | 1          | 0         | 0          | 0         | 0         | 4          |
| 2             | 0         | 0         | 6          | 0         | 0          | 4          | 0         | 0          | 0         | 0          | 0         | 0         | 10         |
| 3             | 0         | 0         | 0          | 0         | 0          | 0          | 0         | 0          | 0         | 0          | 0         | 0         | 0          |
| 4             | 0         | 2         | 7          | 1         | 0          | 1          | 0         | 0          | 0         | 0          | 0         | 0         | 11         |
| 5             | 0         | 1         | 17         | 2         | 1          | 6          | 1         | 0          | 0         | 0          | 0         | 2         | 30         |
| 6             | 0         | 4         | 34         | 3         | 0          | 15         | 2         | 0          | 7         | 1          | 1         | 2         | 69         |
| 7             | 0         | 7         | 61         | 10        | 12         | 26         | 2         | 9          | 2         | 11         | 1         | 2         | 143        |
| 8             | 8         | 5         | 73         | 12        | 3          | 35         | 1         | 14         | 1         | 11         | 1         | 3         | 167        |
| 9             | 3         | 2         | 70         | 11        | 26         | 23         | 1         | 28         | 0         | 10         | 4         | 2         | 180        |
| 10            | 2         | 2         | 23         | 5         | 38         | 7          | 2         | 21         | 3         | 27         | 1         | 2         | 133        |
| 11            | 11        | 2         | 11         | 6         | 12         | 12         | 4         | 23         | 0         | 27         | 3         | 1         | 112        |
| 12            | 4         | 0         | 14         | 3         | 13         | 6          | 3         | 18         | 0         | 18         | 1         | 3         | 83         |
| SU            | 0         | 0         | 0          | 0         | 0          | 0          | 0         | 0          | 0         | 0          | 0         | 0         | 0          |
| <b>TOTALS</b> | <b>28</b> | <b>25</b> | <b>318</b> | <b>54</b> | <b>105</b> | <b>137</b> | <b>17</b> | <b>114</b> | <b>13</b> | <b>105</b> | <b>12</b> | <b>17</b> | <b>945</b> |

**2018-2019**

| GRADE         | ALC       | ASSAULT   | BEHAV      | BULLY     | DRUGS      | FIGHT      | LANG      | SMOKE      | THEFT     | TRUANT     | VANDAL    | WEAPON    | TOTAL       |
|---------------|-----------|-----------|------------|-----------|------------|------------|-----------|------------|-----------|------------|-----------|-----------|-------------|
| K             | 0         | 0         | 3          | 0         | 0          | 0          | 0         | 0          | 1         | 0          | 0         | 0         | 4           |
| 1             | 0         | 0         | 4          | 1         | 0          | 4          | 0         | 0          | 0         | 0          | 0         | 0         | 9           |
| 2             | 0         | 2         | 4          | 0         | 0          | 2          | 0         | 0          | 0         | 0          | 0         | 0         | 8           |
| 3             | 0         | 3         | 11         | 1         | 0          | 4          | 0         | 0          | 1         | 0          | 0         | 0         | 20          |
| 4             | 0         | 2         | 10         | 1         | 0          | 12         | 0         | 1          | 1         | 0          | 1         | 0         | 28          |
| 5             | 0         | 0         | 16         | 2         | 0          | 19         | 0         | 5          | 1         | 0          | 0         | 2         | 45          |
| 6             | 0         | 3         | 34         | 5         | 0          | 21         | 3         | 12         | 1         | 0          | 2         | 5         | 86          |
| 7             | 2         | 4         | 57         | 7         | 9          | 33         | 2         | 30         | 1         | 8          | 2         | 2         | 157         |
| 8             | 17        | 14        | 77         | 16        | 38         | 50         | 6         | 46         | 5         | 25         | 1         | 3         | 298         |
| 9             | 7         | 9         | 72         | 11        | 33         | 22         | 4         | 57         | 5         | 14         | 8         | 3         | 245         |
| 10            | 4         | 6         | 27         | 0         | 21         | 7          | 0         | 21         | 2         | 27         | 2         | 2         | 119         |
| 11            | 7         | 4         | 19         | 0         | 14         | 15         | 1         | 15         | 0         | 23         | 0         | 0         | 98          |
| 12            | 1         | 1         | 14         | 1         | 13         | 1          | 0         | 2          | 0         | 11         | 0         | 0         | 44          |
| SU            | 0         | 0         | 0          | 0         | 0          | 0          | 0         | 0          | 0         | 0          | 0         | 0         | 0           |
| <b>TOTALS</b> | <b>38</b> | <b>48</b> | <b>348</b> | <b>45</b> | <b>128</b> | <b>190</b> | <b>16</b> | <b>189</b> | <b>18</b> | <b>108</b> | <b>16</b> | <b>17</b> | <b>1161</b> |

**TABLE # 5 – DEFINITE SUSPENSION BY GENDER AND REASON****2023-2024**

|               | AC       | AI       | ALC      | ASSAULT   | BEHAV      | BULLY     | DRUGS     | FIGHT      | LANG     | SMOKE      | THEFT     | TRUANT    | VANDAL    | WEAPON   | TOTAL      |
|---------------|----------|----------|----------|-----------|------------|-----------|-----------|------------|----------|------------|-----------|-----------|-----------|----------|------------|
| <b>Female</b> | 0        | 2        | 5        | 13        | 55         | 9         | 33        | 21         | 2        | 56         | 4         | 24        | 10        | 1        | <b>235</b> |
| <b>Male</b>   | 1        | 0        | 3        | 39        | 197        | 47        | 46        | 107        | 1        | 75         | 8         | 41        | 6         | 8        | <b>579</b> |
|               | <b>1</b> | <b>2</b> | <b>8</b> | <b>52</b> | <b>252</b> | <b>56</b> | <b>79</b> | <b>128</b> | <b>3</b> | <b>131</b> | <b>12</b> | <b>65</b> | <b>16</b> | <b>9</b> | <b>814</b> |

**2022-2023**

|               | ALC      | ASSAULT   | BEHAV      | BULLY     | DRUGS     | FIGHT     | LANG      | SMOKE      | THEFT    | TRUANT    | VANDAL    | WEAPON    | TOTAL      |
|---------------|----------|-----------|------------|-----------|-----------|-----------|-----------|------------|----------|-----------|-----------|-----------|------------|
| <b>Female</b> | 6        | 12        | 42         | 9         | 37        | 15        | 3         | 87         | 1        | 31        | 4         | 5         | <b>252</b> |
| <b>Male</b>   | 1        | 27        | 155        | 52        | 48        | 72        | 8         | 68         | 8        | 13        | 8         | 12        | <b>471</b> |
|               | <b>7</b> | <b>39</b> | <b>197</b> | <b>61</b> | <b>85</b> | <b>87</b> | <b>11</b> | <b>155</b> | <b>9</b> | <b>44</b> | <b>12</b> | <b>17</b> | <b>724</b> |

**2021-2022**

|               | ALC       | ASSAULT   | BEHAV      | BULLY     | DRUGS      | FIGHT      | LANG     | SMOKE      | THEFT     | TRUANT    | VANDAL    | WEAPON    | TOTAL       |
|---------------|-----------|-----------|------------|-----------|------------|------------|----------|------------|-----------|-----------|-----------|-----------|-------------|
| <b>Female</b> | 8         | 16        | 80         | 25        | 53         | 28         | 3        | 87         | 7         | 35        | 15        | 2         | <b>359</b>  |
| <b>Male</b>   | 8         | 45        | 209        | 53        | 61         | 113        | 5        | 83         | 7         | 30        | 59        | 13        | <b>686</b>  |
|               | <b>16</b> | <b>61</b> | <b>289</b> | <b>78</b> | <b>114</b> | <b>141</b> | <b>8</b> | <b>170</b> | <b>14</b> | <b>65</b> | <b>74</b> | <b>15</b> | <b>1045</b> |

**2020-2021**

|               | ALC       | ASSAULT   | BEHAV      | BULLY     | DRUGS     | FIGHT      | LANG      | SMOKE      | THEFT     | TRUANT    | VANDAL    | WEAPON    | TOTAL      |
|---------------|-----------|-----------|------------|-----------|-----------|------------|-----------|------------|-----------|-----------|-----------|-----------|------------|
| <b>Female</b> | 5         | 15        | 58         | 19        | 42        | 20         | 4         | 67         | 2         | 23        | 4         | 5         | <b>264</b> |
| <b>Male</b>   | 8         | 32        | 193        | 44        | 42        | 125        | 10        | 49         | 8         | 34        | 6         | 10        | <b>561</b> |
|               | <b>13</b> | <b>47</b> | <b>251</b> | <b>63</b> | <b>84</b> | <b>145</b> | <b>14</b> | <b>116</b> | <b>10</b> | <b>57</b> | <b>10</b> | <b>15</b> | <b>825</b> |

**2019-2020**

|               | ALC       | ASSAULT   | BEHAV      | BULLY     | DRUGS      | FIGHT      | LANG      | SMOKE      | THEFT     | TRUANT     | VANDAL    | WEAPON    | TOTAL      |
|---------------|-----------|-----------|------------|-----------|------------|------------|-----------|------------|-----------|------------|-----------|-----------|------------|
| <b>Female</b> | 18        | 5         | 55         | 7         | 25         | 19         | 5         | 41         | 11        | 52         | 2         | 3         | <b>243</b> |
| <b>Male</b>   | 10        | 20        | 263        | 47        | 80         | 118        | 12        | 73         | 2         | 53         | 10        | 14        | <b>702</b> |
|               | <b>28</b> | <b>25</b> | <b>318</b> | <b>54</b> | <b>105</b> | <b>137</b> | <b>17</b> | <b>114</b> | <b>13</b> | <b>105</b> | <b>12</b> | <b>17</b> | <b>945</b> |

**2018-2019**

|               | ALC       | ASSAULT   | BEHAV      | BULLY     | DRUGS      | FIGHT      | LANG      | SMOKE      | THEFT     | TRUANT     | VANDAL    | WEAPON    | TOTAL       |
|---------------|-----------|-----------|------------|-----------|------------|------------|-----------|------------|-----------|------------|-----------|-----------|-------------|
| <b>Female</b> | 23        | 7         | 71         | 13        | 56         | 22         | 3         | 88         | 3         | 58         | 2         | 2         | <b>348</b>  |
| <b>Male</b>   | 15        | 41        | 277        | 32        | 72         | 168        | 13        | 101        | 15        | 50         | 14        | 15        | <b>813</b>  |
|               | <b>38</b> | <b>48</b> | <b>348</b> | <b>45</b> | <b>128</b> | <b>190</b> | <b>16</b> | <b>189</b> | <b>18</b> | <b>108</b> | <b>16</b> | <b>17</b> | <b>1161</b> |

**TABLE # 6 – DEFINITE SUSPENSION BY GENDER AND GRADE****2023-2024**

|               | K        | gr1      | gr2      | gr3      | gr4       | gr5       | gr6       | gr7       | gr8       | gr9        | gr10       | gr11       | gr12      | SU       | TOTAL      |
|---------------|----------|----------|----------|----------|-----------|-----------|-----------|-----------|-----------|------------|------------|------------|-----------|----------|------------|
| <b>Female</b> | 0        | 0        | 2        | 2        | 2         | 2         | 8         | 22        | 41        | 79         | 36         | 26         | 15        |          | <b>235</b> |
| <b>Male</b>   | 0        | 1        | 1        | 6        | 20        | 36        | 38        | 59        | 54        | 136        | 105        | 90         | 33        |          | <b>579</b> |
|               | <b>0</b> | <b>1</b> | <b>3</b> | <b>8</b> | <b>22</b> | <b>38</b> | <b>46</b> | <b>81</b> | <b>95</b> | <b>215</b> | <b>141</b> | <b>116</b> | <b>48</b> | <b>0</b> | <b>814</b> |

**2022-2023**

|               | K        | gr1      | gr2      | gr3      | gr4      | gr5      | gr6       | gr7       | gr8        | gr9        | gr10       | gr11       | gr12      | SU       | TOTAL      |
|---------------|----------|----------|----------|----------|----------|----------|-----------|-----------|------------|------------|------------|------------|-----------|----------|------------|
| <b>Female</b> | 0        | 2        | 0        | 2        | 2        | 0        | 21        | 32        | 30         | 62         | 46         | 42         | 13        |          | <b>252</b> |
| <b>Male</b>   | 0        | 0        | 7        | 6        | 7        | 7        | 34        | 53        | 87         | 76         | 98         | 63         | 34        |          | <b>472</b> |
|               | <b>0</b> | <b>2</b> | <b>7</b> | <b>8</b> | <b>9</b> | <b>7</b> | <b>55</b> | <b>85</b> | <b>117</b> | <b>138</b> | <b>144</b> | <b>105</b> | <b>47</b> | <b>0</b> | <b>724</b> |

**2021-2022**

|               | K        | gr1      | gr2      | gr3      | gr4      | gr5       | gr6       | gr7        | gr8        | gr9        | gr10       | gr11       | gr12      | SU       | TOTAL       |
|---------------|----------|----------|----------|----------|----------|-----------|-----------|------------|------------|------------|------------|------------|-----------|----------|-------------|
| <b>Female</b> | 1        | 0        | 0        | 0        | 1        | 2         | 19        | 34         | 79         | 115        | 57         | 39         | 12        |          | <b>359</b>  |
| <b>Male</b>   | 0        | 2        | 1        | 2        | 6        | 15        | 39        | 75         | 153        | 137        | 79         | 117        | 60        |          | <b>686</b>  |
|               | <b>1</b> | <b>2</b> | <b>1</b> | <b>2</b> | <b>7</b> | <b>17</b> | <b>58</b> | <b>109</b> | <b>232</b> | <b>252</b> | <b>136</b> | <b>156</b> | <b>72</b> | <b>0</b> | <b>1045</b> |

**2020-2021**

|               | K        | gr1      | gr2      | gr3      | gr4       | gr5       | gr6       | gr7        | gr8        | gr9        | gr10      | gr11      | gr12      | SU       | TOTAL      |
|---------------|----------|----------|----------|----------|-----------|-----------|-----------|------------|------------|------------|-----------|-----------|-----------|----------|------------|
| <b>Female</b> | 0        | 0        | 2        | 3        | 2         | 4         | 22        | 61         | 63         | 72         | 18        | 12        | 5         |          | <b>264</b> |
| <b>Male</b>   | 0        | 2        | 2        | 3        | 10        | 19        | 59        | 88         | 95         | 100        | 60        | 87        | 36        |          | <b>561</b> |
|               | <b>0</b> | <b>2</b> | <b>4</b> | <b>6</b> | <b>12</b> | <b>23</b> | <b>81</b> | <b>149</b> | <b>158</b> | <b>172</b> | <b>78</b> | <b>99</b> | <b>41</b> | <b>0</b> | <b>825</b> |

**2019-2020**

|               | K        | gr1      | gr2       | gr3      | gr4       | gr5       | gr6       | gr7        | gr8        | gr9        | gr10       | gr11       | gr12      | SU       | TOTAL      |
|---------------|----------|----------|-----------|----------|-----------|-----------|-----------|------------|------------|------------|------------|------------|-----------|----------|------------|
| <b>Female</b> | 0        | 0        | 0         | 0        | 1         | 1         | 14        | 45         | 40         | 53         | 36         | 34         | 19        |          | <b>243</b> |
| <b>Male</b>   | 3        | 4        | 10        | 0        | 10        | 29        | 56        | 98         | 126        | 127        | 97         | 78         | 64        |          | <b>702</b> |
|               | <b>3</b> | <b>4</b> | <b>10</b> | <b>0</b> | <b>11</b> | <b>30</b> | <b>70</b> | <b>143</b> | <b>166</b> | <b>180</b> | <b>133</b> | <b>112</b> | <b>83</b> | <b>0</b> | <b>945</b> |

**2018-2019**

|               | K        | gr1      | gr2      | gr3       | gr4       | gr5       | gr6       | gr7        | gr8        | gr9        | gr10       | gr11      | gr12      | SU       | TOTAL       |
|---------------|----------|----------|----------|-----------|-----------|-----------|-----------|------------|------------|------------|------------|-----------|-----------|----------|-------------|
| <b>Female</b> | 1        | 2        | 0        | 1         | 2         | 7         | 13        | 39         | 139        | 49         | 52         | 30        | 13        |          | <b>348</b>  |
| <b>Male</b>   | 3        | 7        | 8        | 19        | 26        | 38        | 73        | 118        | 159        | 196        | 67         | 68        | 31        |          | <b>813</b>  |
|               | <b>4</b> | <b>9</b> | <b>8</b> | <b>20</b> | <b>28</b> | <b>45</b> | <b>86</b> | <b>157</b> | <b>298</b> | <b>245</b> | <b>119</b> | <b>98</b> | <b>44</b> | <b>0</b> | <b>1161</b> |

**TABLE # 7 – ACTUAL NUMBER OF STUDENTS SUSPENDED**

**INDEFINITE SUSPENSION**

|                         | 18-19    | 19-20    | 20-21    | 21-22    | 22-23    | 23-24    |
|-------------------------|----------|----------|----------|----------|----------|----------|
| Actual Female:          |          |          |          | 1        | 1        | 0        |
| Actual Male:            | 3        |          |          | 1        |          | 3        |
| <b>Actual Students:</b> | <b>3</b> | <b>0</b> | <b>0</b> | <b>2</b> | <b>1</b> | <b>3</b> |
| Total Suspensions:      | 3        | 0        | 0        | 3        | 1        | 3        |

**DEFINITE SUSPENSION**

|                         | 18-19      | 19-20      | 20-21      | 21-22      | 22-23      | 23-24      |
|-------------------------|------------|------------|------------|------------|------------|------------|
| Actual Female:          | 238        | 191        | 187        | 237        | 172        | 168        |
| Actual Male:            | 574        | 510        | 389        | 461        | 354        | 415        |
| <b>Actual Students:</b> | <b>812</b> | <b>701</b> | <b>576</b> | <b>698</b> | <b>526</b> | <b>583</b> |
| Total Suspensions:      | 1161       | 945        | 825        | 1045       | 724        | 814        |

**TABLE # 8 – SUMMARY OF PREVIOUS YEARS' SUSPENSIONS**

|                         | 18-19       | 19-20      | 20-21      | 21-22       | 22-23      | 23-24      |
|-------------------------|-------------|------------|------------|-------------|------------|------------|
| <b>Indefinite Susp.</b> | <b>3</b>    | <b>0</b>   | <b>0</b>   | <b>3</b>    | <b>1</b>   | <b>3</b>   |
| <b>Definite Susp.</b>   | <b>1161</b> | <b>945</b> | <b>825</b> | <b>1045</b> | <b>724</b> | <b>814</b> |

**TABLE # 9 – SUSPENSION SUMMARY BY SCHOOL**

**INDEFINITE SUSPENSIONS**

| <b>MIDDLE/SECONDARY</b>          | <b>18-19</b> | <b>19-20</b> | <b>20-21</b> | <b>21-22</b> | <b>22-23</b> | <b>23-24</b> |
|----------------------------------|--------------|--------------|--------------|--------------|--------------|--------------|
| Canyon Falls Middle              | n/a          |              |              |              |              |              |
| Constable Neil Bruce Middle      |              |              |              | 2            |              |              |
| École Dr. Knox Middle            |              |              |              |              |              |              |
| École George Elliot              |              |              |              |              |              |              |
| École Glenrosa Middle            |              |              |              |              |              |              |
| École H.S. Grenda Middle         | n/a          | n/a          | n/a          | n/a          |              |              |
| École Kelowna Secondary          | 1            |              |              |              |              |              |
| École K.L.O. Middle              |              |              |              |              |              |              |
| Mount Boucherie Secondary        | 2            |              |              | 1            |              | 3            |
| École Okanagan Mission Secondary |              |              |              |              |              |              |
| Rutland Middle                   |              |              |              |              |              |              |
| Rutland Senior                   |              |              |              |              | 1            |              |
| Springvalley Middle.             |              |              |              |              |              |              |
| <b>Total Middle/Secondary:</b>   | <b>3</b>     | <b>0</b>     | <b>0</b>     | <b>3</b>     | <b>1</b>     | <b>3</b>     |
| <b>ELEMENTARY</b>                |              |              |              |              |              |              |
| A.S. Matheson                    |              |              |              |              |              |              |
| Anne McClymont                   |              |              |              |              |              |              |
| Bankhead                         |              |              |              |              |              |              |
| École Belgo                      |              |              |              |              |              |              |
| Black Mountain                   |              |              |              |              |              |              |
| École Casorso                    |              |              |              |              |              |              |
| Chief Tomat                      |              |              |              |              |              |              |
| Chute Lake                       |              |              |              |              |              |              |
| Davidson Road                    |              |              |              |              |              |              |
| École Dorothea Walker            |              |              |              |              |              |              |
| Ellison                          |              |              |              |              |              |              |
| George Pringle                   |              |              |              |              | n/a          | n/a          |
| École Glenmore                   |              |              |              |              |              |              |
| École Glenrosa                   |              |              |              |              |              |              |
| Helen Gorman                     |              |              |              |              |              |              |
| École Hudson Road                |              |              |              |              |              |              |
| Mar Jok                          |              |              |              |              |              |              |
| North Glenmore                   |              |              |              |              |              |              |
| Oyama                            |              |              |              |              |              |              |
| Peachland                        |              |              |              |              |              |              |
| Pearson                          |              |              |              |              |              |              |
| École Peter Greer                |              |              |              |              |              |              |
| Quigley                          |              |              |              |              |              |              |
| Raymer                           |              |              |              |              |              |              |
| Rose Valley                      |              |              |              |              |              |              |
| Rutland Elem.                    |              |              |              |              |              |              |
| Shannon Lake                     |              |              |              |              |              |              |
| South Kelowna                    |              |              |              |              |              |              |
| South Rutland                    |              |              |              |              |              |              |
| Springvalley                     |              |              |              |              |              |              |
| Watson Road                      |              |              |              |              |              |              |
| Webber Road                      |              |              |              |              |              |              |
| <b>Total Elementary:</b>         | <b>0</b>     | <b>0</b>     | <b>0</b>     | <b>0</b>     | <b>0</b>     | <b>0</b>     |
| <b>Total Middle/Secondary:</b>   | <b>3</b>     | <b>0</b>     | <b>0</b>     | <b>3</b>     | <b>1</b>     | <b>3</b>     |
| <b>TOTAL INDEFINITES:</b>        | <b>3</b>     | <b>0</b>     | <b>0</b>     | <b>3</b>     | <b>1</b>     | <b>3</b>     |

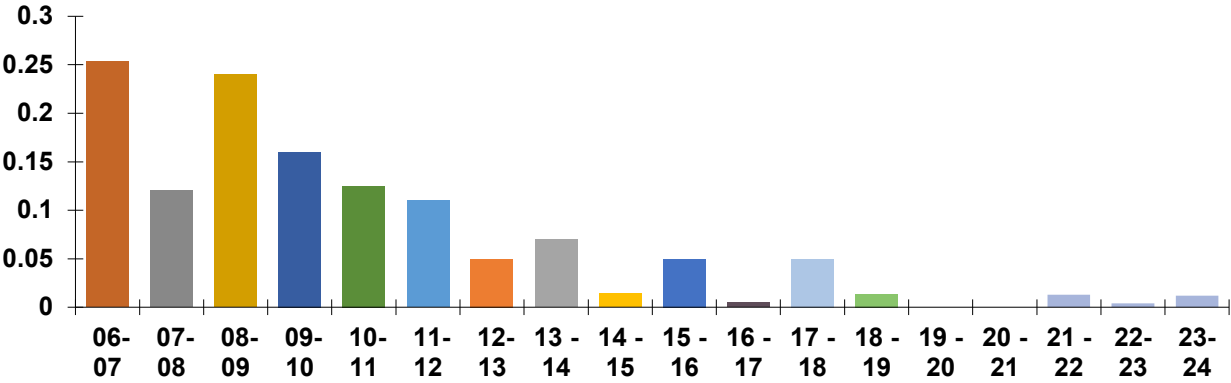
**TABLE # 9 – SUSPENSION SUMMARY BY SCHOOL - continued**

**DEFINITE SUSPENSIONS**

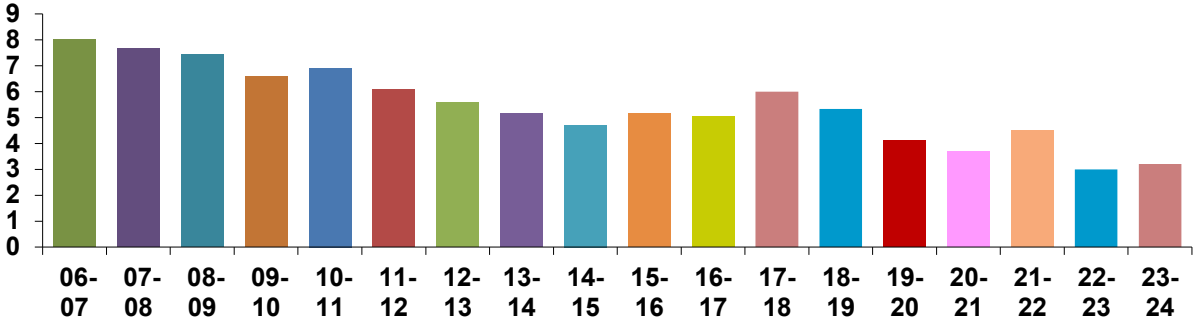
| <b>MIDDLE/SECONDARY</b>               | <b>18-19</b> | <b>19-20</b> | <b>20-21</b> | <b>21-22</b> | <b>22-23</b> | <b>23-24</b> |
|---------------------------------------|--------------|--------------|--------------|--------------|--------------|--------------|
| Canyon Falls Middle                   | n/a          | 3            | 1            | 8            | 15           | 9            |
| Constable Neil Bruce Middle           | 82           | 73           | 91           | 87           | 70           | 34           |
| École Dr. Knox Middle                 | 95           | 84           | 41           | 107          | 49           | 22           |
| École George Elliot                   | 62           | 67           | 39           | 84           | 56           | 50           |
| École Glenrosa Middle                 | 217          | 78           | 88           | 78           | 93           | 121          |
| École H.S. Grenda Middle              | n/a          | n/a          | n/a          | n/a          | 6            | 23           |
| École Kelowna Sec.                    | 73           | 103          | 28           | 87           | 77           | 101          |
| École K.L.O. Middle                   | 101          | 106          | 44           | 50           | 3            | 5            |
| Mount Boucherie Secondary             | 103          | 99           | 119          | 151          | 89           | 147          |
| École Okanagan Mission Secondary      | 107          | 66           | 40           | 70           | 57           | 19           |
| Rutland Middle                        | 45           | 23           | 81           | 55           | 16           | 21           |
| Rutland Senior                        | 63           | 84           | 98           | 142          | 74           | 115          |
| Springvalley Middle                   | 50           | 61           | 71           | 51           | 46           | 45           |
| Central School / Distributed Learning | 21           | 34           | 23           | 31           | 32           | 19           |
| <b>Total Middle/Secondary:</b>        | <b>1019</b>  | <b>881</b>   | <b>764</b>   | <b>1007</b>  | <b>683</b>   | <b>731</b>   |
| <b>ELEMENTARY SCHOOLS</b>             |              |              |              |              |              |              |
| A.S. Matheson                         | 0            | 0            | 0            | 3            | 0            | 3            |
| Anne McClymont                        | 1            | 3            | 2            | 0            | 0            | 0            |
| Bankhead                              | 1            | 4            | 1            | 2            | 2            | 1            |
| École Belgo                           | 4            | 0            | 1            | 0            | 1            | 0            |
| Black Mountain                        | 0            | 0            | 4            | 0            | 0            | 0            |
| École Casorso                         | 0            | 0            | 1            | 0            | 0            | 9            |
| Chief Tomat                           | 6            | 10           | 3            | 0            | 0            | 5            |
| Chute Lake                            | 5            | 1            | 0            | 0            | 0            | 0            |
| Davidson                              | 15           | 4            | 7            | 2            | 0            | 0            |
| École Dorothea Walker                 | 2            | 0            | 0            | 1            | 0            | 0            |
| Ellison                               | 0            | 0            | 0            | 0            | 0            | 0            |
| École George Pringle                  | 13           | 1            | 1            | 4            | n/a          | n/a          |
| École Glenmore                        | 2            | 2            | 2            | 7            | 0            | 1            |
| École Glenrosa                        | 3            | 0            | 0            | 0            | 5            | 2            |
| Helen Gorman                          | 2            | 0            | 0            | 0            | 2            | 6            |
| École Hudson Road                     | 0            | 0            | 0            | 0            | 7            | 3            |
| Mar Jok                               | 0            | 0            | 0            | 0            | 0            | 0            |
| North Glenmore                        | 3            | 4            | 3            | 0            | 0            | 1            |
| Oyama                                 | 0            | 0            | 0            | 0            | 0            | 1            |
| Peachland                             | 7            | 3            | 9            | 4            | 1            | 0            |
| Pearson                               | 4            | 0            | 0            | 0            | 5            | 0            |
| École Peter Greer                     | 14           | 4            | 7            | 0            | 2            | 14           |
| Quigley                               | 30           | 20           | 7            | 6            | 0            | 9            |
| Raymer                                | 3            | 1            | 6            | 0            | 5            | 9            |
| Rose Valley                           | 2            | 1            | 0            | 0            | 2            | 5            |
| Rutland                               | 16           | 5            | 5            | 6            | 5            | 12           |
| Shannon Lake                          | 0            | 0            | 0            | 0            | 0            | 0            |
| South Kelowna                         | 3            | 0            | 0            | 1            | 3            | 1            |
| South Rutland                         | 0            | 0            | 0            | 0            | 0            | 0            |
| Springvalley                          | 4            | 1            | 2            | 0            | 1            | 0            |
| Watson Road                           | 2            | 0            | 0            | 2            | 0            | 1            |
| Webber Road                           | -            | -            | -            | -            | 0            | 0            |
| <b>Total Elementary Schools:</b>      | <b>142</b>   | <b>64</b>    | <b>61</b>    | <b>38</b>    | <b>41</b>    | <b>83</b>    |
| <b>Total Middle/Secondary:</b>        | <b>1019</b>  | <b>881</b>   | <b>764</b>   | <b>1007</b>  | <b>683</b>   | <b>731</b>   |
| <b>TOTAL DEFINITES:</b>               | <b>1161</b>  | <b>945</b>   | <b>825</b>   | <b>1045</b>  | <b>724</b>   | <b>814</b>   |

**TABLE # 10 – SUSPENSIONS AS A PERCENTAGE OF DISTRICT POPULATION**

**INDEFINITE SUSPENSION**



**DEFINITE SUSPENSIONS**



## APPENDIX C

### INDEFINITE AND DEFINITE SUSPENSIONS DATA ANALYSIS 2023-2024

#### Profiles (Indefinite Suspensions)

---

The characteristic profile of the indefinitely suspended student has not changed significantly over the past number of school years. For the 2023-2024 school year the numbers of indefinite suspensions increased but not significantly, as seen from the data in Table # 1. In perspective of past years, the number of indefinite suspensions continued to be relatively low during the 2023-2024 school year (i.e., 3 indefinite suspensions). This is clearly evident when comparing the data collected from the 2023-2024 school year to the data collected for years from 2006-2007 to 2010-2011 school years (see Table # 10). The trend of fewer indefinite suspensions continued at a rate of no more than 3 in a year from the 2018- 2019 school year until the end of the 2023-2024 school year. The reduced numbers of indefinite suspensions over that time period appears to reflect increased vigilance on the part of school-based administrators, as well as improved interventions and support opportunities provided to students who may be at risk for an indefinite suspension. This is particularly true in the area of behaviour related issues. The low numbers of indefinite suspensions in 2023-2024 are not anomalous, in fact they are far fewer than numbers reported in 2009-2010 (i.e., 36, see Table # 10) and significantly fewer than in the 2001-2002 school year when 90 indefinite suspension hearings were held (data on file).

The availability of proactive options and intervention support for students at risk of being indefinitely suspended proved beneficial as far as maintaining the lower number of indefinite suspensions again this last school year. These options include the suspension alternatives as well as additional counselling intervention structures (such as individual drug and alcohol counselling). In addition, the Interior Health Authority provides funding for a drug education and prevention worker (subcontracted through ARC Programs) which has increased the level of awareness and knowledge of "drug related" supports and education resources for students in the School District and community. The support of ARC and the Foundry remains a valuable support for Secondary schools, Middle schools, Elementary schools and Central Programs and Services in School District No. 23.

In the 2023-2024 school year the number of indefinite suspensions for males was 3; there were no female indefinite suspensions. (Given the data for 2023-2024 a ratio is not reported.) The increase in the number of indefinitely suspended students from 2022-2023 to 2023-2024 can be accounted for by the increase in suspensions for male students at the Grades 9 and 10 levels. As noted above, there were no female students indefinitely suspended in 2023-2024 while in the 2022-2023 school year there was 1 indefinite suspension for a female (at the grade 11 level). Overall, the current indefinite suspension numbers remain much smaller than the numbers were 20-25 years ago. (Those numbers were as high as 90 to well over 100 a year. That data is still available on file.)

Male students who were indefinitely suspended were at the grade 9 and 10 levels. Numbers of indefinite suspensions for males remained somewhat unchanged over the preceding school years with the exception of the categories of "Assault" and "Behaviour". The increase overall in those areas of indefinite suspensions is minimal going from 0 in 2022-2023 to 3 in 2023-2024. These 3 indefinite suspensions accounted for all of the indefinite suspensions for 2023-2024. The overall increase in male indefinite suspensions, while not significant, requires continued administrator and staff vigilance and monitoring as well as the consistent use of supportive interventions.

Indefinite suspensions for male students were most common in the following category:

- Assault (66.7%) - 2 of the 3 indefinite suspensions
- Behaviour (33.3%) - 1 of the 3 indefinite suspensions

Overall, the number of males indefinitely suspended has not increased beyond 3 during the period between the 2018-2019 and 2023-2024 school years.



There was a decrease in female suspensions (i.e., from 1 to 0). The decrease noted by suspension category was for “Assault” (from 1 to 0). Logically there were no category areas with an increase in numbers for females. Even though the number of incidents for females remains relatively negligible, continued monitoring of any changes remains essential in future school years.

It should also be noted that indefinite suspensions for drug related issues, have remained at "0" again this last school year. It is believed that this pattern of reduced numbers of indefinite suspensions for “Drugs” reflects the collaborative efforts of School District No. 23 staff in conjunction with the RCMP and agencies such as ARC programs utilizing such initiatives as the Alternative to Suspension programs (at the "Y" in Rutland, Kelowna, and West Kelowna), in addition to the impact of school-based Community Youth Safety Officers/School Resource Officers. District staff, ARC programs, the Foundry, and the RCMP all deserve thanks for their continued support for and assistance to students.

Overall, the data on indefinite suspensions continues to reflect the general trend of fewer than 3 per year or fewer, that has been noted since 2018-2019. It also continues to be encouraging to see that the number of indefinite suspensions is significantly lower than the numbers in the 1990’s. Consistent efforts to provide appropriate proactive interventions and services, by District staff, Community Youth Safety Officers/School Resource Officers, HRVY Project, other Ministries’ staff and community agencies’ staff, should result in the trend of lower numbers of indefinite suspensions being evident again in 2024-2025.

### **Profiles (Definite Suspensions)**

---

In general, there was a notable increase in the number of definite suspensions issued during the 2023-2024 school year over the previous year. In fact, the total is 90 more than the 2022-2023 school year. Also during the 2023-2024 school year there was data collected in two additional categories (Attendance Issues (AI), Administrative Concern (AC)) in addition to the data for the 12 categories that comprised the overall data collected by District staff. This is a noticeable increase, but still substantially fewer when comparing the number of definite suspensions in the 2018-2019 school year to the 2023-2024 school year (1161 in 2018-2019 as compared to 814 in 2023-2024). The comparative overall reduction during that span of years is consistent for both the number of definite suspensions for males (i.e., 813 in 2018-2019 as compared to 579 in 2023-2024) and the numbers for females (348 in 2018-2019 as compared to 235 in 2023-2024). Comparing the data from the previous two school years, definite suspensions for males increased 471 from 2022-2023 to 579 in 2023-2024, while definite suspensions involving females decreased from 252 in 2022-2023 to 235 in 2023-2024. The number of definite suspensions for males remains lower than the numbers from the school years 2018-2019 and prior. The trend of numbers of definite suspensions experienced for females continued this past year to remain at less than 400, a pattern seen in the data since 2010-2011 (data on file).

Upon closer examination of the data, it is evident that this last school year’s increase in the number of definite suspensions requires some interpretation of the category numbers. This interpretation is included below.

Overall, the largest increases in definite suspensions were seen for the following categories:

- General behaviour (from 197 to 252)
- Truancy (from 44 to 65)
- Fighting (from 87 to 128)

The largest decrease was seen for:

- Smoking (from 155 to 131)

Males were most commonly definitely suspended for:

- General behaviour (34.0%)
- Fighting (19.8%)
- Smoking (12.9%)

Males definitely suspended were most commonly in grades 7 through 11 with 76.7% of all such suspensions coming from these grades.

Females were most commonly definitely suspended for:

- Smoking (23.8%)
- General behaviour (23.4%)
- Drugs (15.3%)

Females definitely suspended were most commonly in grades 7, 8, 9, 10, and 11 with 86.8% of all such suspensions coming from these grades. These patterns are consistent with the 2022-2023 data as well as with a number of prior school years for both males and females.

## **SUMMARY**

Upon review of the data, it is apparent that the low numbers of indefinite suspensions from 2018-2019 to 2023-2024 continued a pattern of fewer than 10 indefinite suspensions (or more) seen in previous years. The 3 indefinite suspensions recorded last school year are again among the lowest numbers of indefinite suspensions on record. This is unquestionably an encouraging indicator of the District's continued utilizing of positive and proactive approaches when dealing with students who present with challenging behaviours. The relative effectiveness and appropriateness of interventions and diversion processes that have been established and implemented over a number of years for students, at risk for indefinite suspension, is reflected in the reduction of the necessity to utilize the indefinite suspension process. Despite some relatively minor fluctuation in the number of indefinite suspensions over the past 6 school years, the indefinite suspension numbers are significantly below their historic high of 139 in the 1995-1996 school year (data on file).

While the increase in the definite suspension category is not substantial nor significant when compared to many previous years' numbers, ongoing monitoring of the data and trends is required to determine any potential need to enhance or adapt current intervention practices. Of note is the increase in the number of students in grade 9 and 10 who are engaging in behaviours that are resulting in definite suspensions (such as behaviour and fighting categories in Table # 4). The issue of students exhibiting challenging behaviour in schools continues to be of concern for the Ministry of Education and Child Care and the School District. District staff continue to work with staff from the Ministry of Education and Child Care, Safer Schools, and local agencies to employ intervention programs that are available to School Districts in the province as well as programs and supports developed and implemented by the District to support positive behaviour outcomes.

Overall, there was an increase in both indefinite and definite suspensions this last year, though the totals recorded were far less the levels seen in 2018-2019 and continue the trend line of far fewer indefinite and definite suspensions since 2006-2007 (see Table # 10). It is believed that proactive initiatives in the District are for the most part having the desired impact of bringing down suspension numbers. The reduction can be attributed in part to the emphasis by a number of schools on utilizing the HRVY Project, ARC Programs, and the Foundry Mental Health Clinicians supporting students in schools, Drug and Alcohol intervention programs, school-based counselors, social-emotional learning teachers, school-based behavior teachers and behaviour CEAs as well as District Social Emotional Learning Specialists. An increase in behaviour intervention training and in-service for staff at all levels continues to prove valuable. These programs have all had a positive effect on reducing challenging behaviour in schools in the District but, the "work" must continue on an ongoing basis. It is essential that active monitoring of student behaviour by school staffs continue and that school Codes of Conduct to be vigorously and appropriately enforced. It is also important

and appropriate to commend the RCMP, MCFD, IHA, ARC Programs, and the Foundry for their commitment to providing support services for students in School District No. 23 who face challenges.